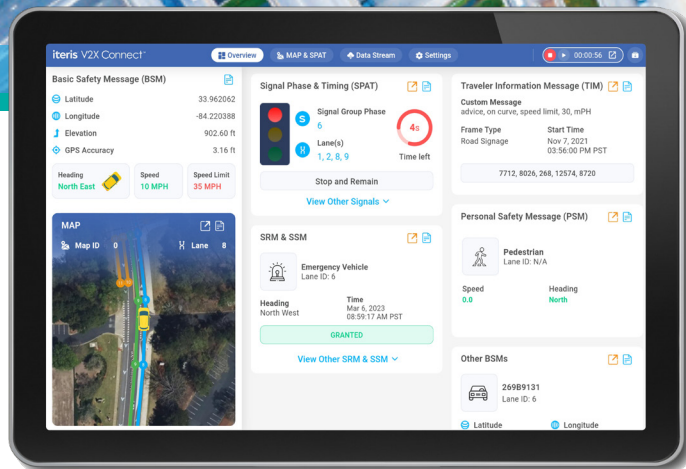




# Iteris V2X Connect™

Advanced and intuitive diagnostic tool to validate CV applications



Visualize live CV data on an interactive map



Monitor, decode and validate CV applications in the field or offsite



Record and replay V2X messages for offline analysis

## Capture and monitor V2X communications with ease

The Iteris V2X Connect™ mobile application provides a process to visually monitor, decode and validate over-the-air (OTA) connected vehicle (CV) data from vehicle-to-everything (V2X) communications. V2X Connect is a packet collector and analysis tool that captures the CV OTA network traffic and stores that data for offline analysis.

V2X data generated and broadcast by the vehicle onboard unit (OBU) and associated CV data, like infrastructure roadside unit (RSU) data, is captured and visualized in a realtime display and interactive navigation-style map. V2X Connect automatically saves and replays stored driving sessions in raw (Abstract Syntax Notation One – ASN.1) Packet Capture (PCAP) formatted files received from supported vehicle onboard units and generic PCAP files from any manufacturer’s OBU or RSU.

## Deploy and implement CV applications

Used for connected vehicle system validation and interoperability analysis, V2X Connect verifies SAE J2735, IEEE 1609.2/3, and Connected Transportation

Interoperability (CTI) standards following CTI 4501/4502 guidelines. The Iteris V2X Connect validation software is a seamless mobile application that assists traffic management agencies and systems integrators in effectively deploying and implementing a variety of connected vehicle applications, including:

- Built-in Wrong Way Vehicle
- Curve/Ramp Speed Warning
- Pedestrian Safety
- Signal Priority and Preemption applications

The software supports the full suite of SAE J2735 (2024+) based CV messages:

- SPaT: Signal phase and timing
- MAP: Geographic location geometry
- TIM: Traveler information messages
- SRM: Signal request message
- SSM: Signal status message
- PSM: Pedestrian safety message
- BSM: Vehicle basic safety message
- PSM2
- RTCM
- RWM
- PVD
- PDR
- TUM
- CCM
- WSA
- RSM
- PDC
- TAM
- TUMACK
- SDSM
- RGA
- MSCM



Certification Pending

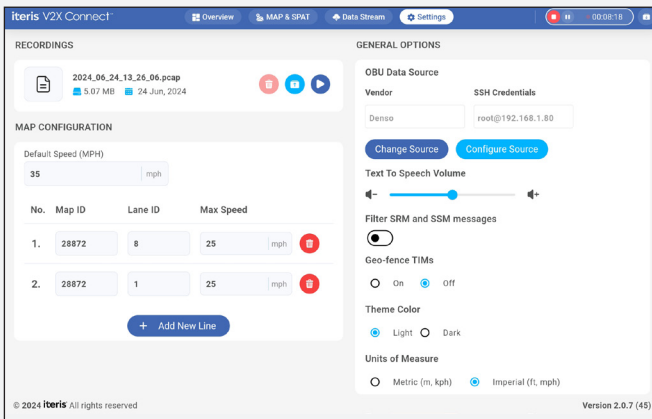


## Key Benefits

- Traffic departments and engineers can endorse mobility and safety-based CV application deployments while managing multiple solutions.
- CV systems integrators can verify data exchange between vehicle-to-vehicle (V2V) and vehicle-to-infrastructure (V2I) applications to confirm interoperability between vendor solutions.
- ITS deployment contractors can certify and document CV installations for quick and easy acceptance testing requirements.

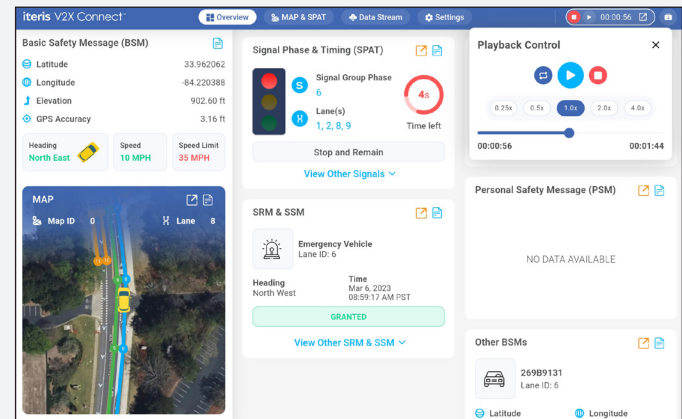
## Tablet Specifications

Brand	SAMSUNG
Series	Galaxy Tab A – various models
Android Version	10 or greater
Standing screen display size	10.1 Inches or greater
Max Screen Resolution	1900x1200 Pixels
Hard Drive	32 GB or greater
Flash Memory	32 GB
Wireless Type	802.11b/g/n – various models can include 802.11a/b/g/n



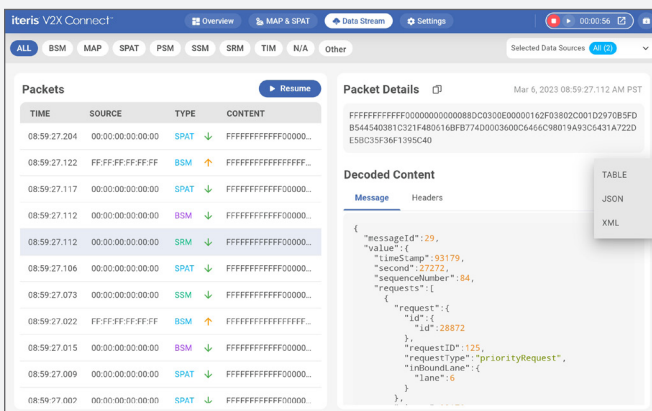
### Interoperable and Versatile

Configure OBU by type and priority level to analyze live or pre-recorded PCAP files



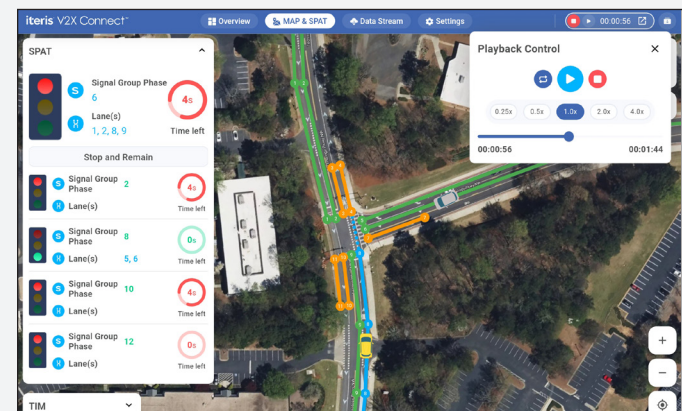
### Intuitive and User-friendly

Real-time display of V2X communications



### Advanced Data

Save, replay and decode stored driving sessions in raw PCAP format.



### Interactive Map

Visualize vehicle activity and V2X communications on a navigation-style map.