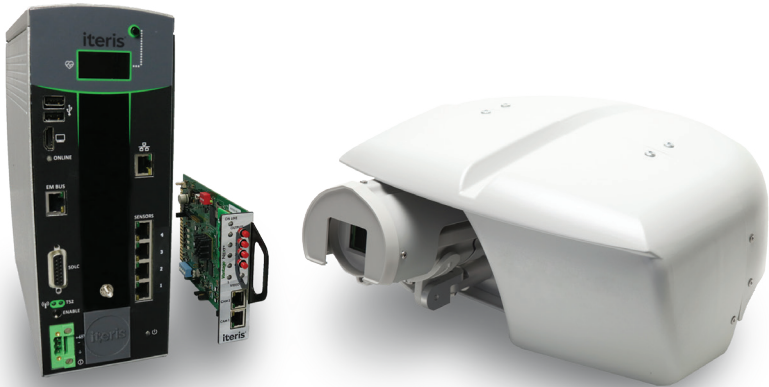




Vantage Vector® with Vantage Next®

An all-in-one hybrid detection for stop bar and advance detection



Lane-by-lane functionality for smart intersection data



The ideal solution for adaptive traffic control systems



A cost-effective and easy-to-install sensor – no more cutting loops or pulling extra cables

Advanced performance in a single sensor

Vantage Vector® paired with Vantage Next® is a one-of-a kind detection solution that fuses state-of-the-art video and advanced 4D, high-definition (HD) radar capabilities for maximum intersection safety and performance. This powerful detection solution enables multiple applications, including advanced dilemma zone and collision avoidance functionality, and use with adaptive traffic control systems. The system's improved zone logic and phase input control, and expanded data set are a game-changer.

Together with the Vantage Next system, Vantage Vector provides advanced individual lane detection, delivering even more precise traffic data. The 16 radar zones are easily configurable and programmable to any of the seven zone

types, including: presence, delay, extension, count, pulse, CSO and none. In addition, the radar zones can be combined with 32 video zones to provide a robust data set for advanced intelligent transportation system (ITS) applications, such as long-left-turn pockets and queue detection, making it the ideal solution for all traffic management needs.

Traffic adaptive and responsive

When used with adaptive traffic control systems, the Vector with Next solution improves efficiency and responsiveness by providing accurate detection data to feed into virtually any platform. For large intersections with six or more lanes or locations that require more than four sensors, we recommend the Vantage Next Max™ platform.



More Benefits

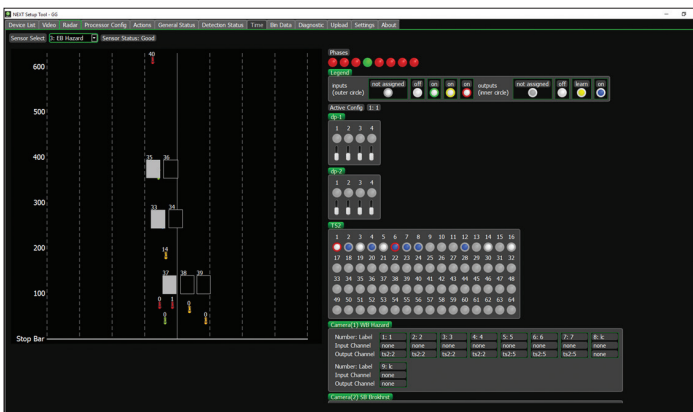
- Fully compatible with Iteris' ClearGuide SPM and VantageLive! software for more detailed and accurate traffic data
- Includes SmartCycle® and PedTrax® for bicycle and pedestrian detection and counting
- Vehicle detection up to 600 feet
- Color-coded zones for effortless viewing of phase activity
- Choose from a rack-mount or shelf-mount cabinet control units



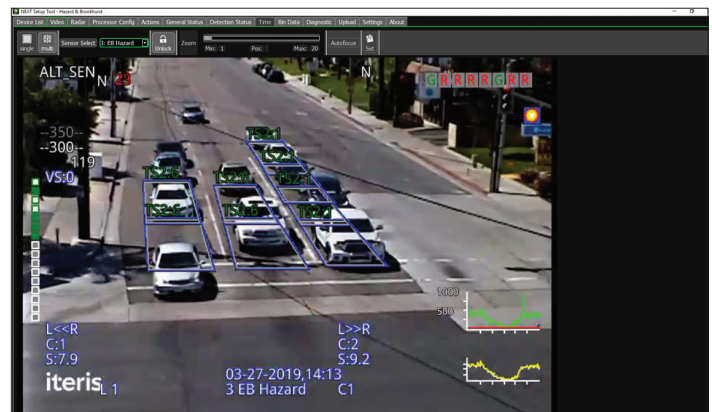
Specifications

Imager	Focal Length 4.5° tele to 48° wide
	Dynamic Range > 100dB
	Luminance Range 0.003 lux to 10,000 lux
	3D-DNR Noise Reduction
Lens	12x Optical Zoom
Heater	Indium Tin Oxide
Connections	Terminal Block
	RJ-45
	cat5e
Radar	
Frequency	24GHz (K-band)
Accuracy	Speed 0 to 150mph ±1mph (0 to 240kph ±1.5kph)
Detection	1 to 6 vehicle lanes
Tracked Objects	64 max
Weight	10 Pounds (4.55kg)

Environment	
Temperature	-35°F to +165°F (-34°C to +74°C)
Electrical	48VDC 10W(Typical) 20W(Max)
Physical	17" (432mm) D x 15" (381mm) W x 14" (356mm) H
	Excluding Mounting Bracket
Weight	10 Pounds (4.55kg)
Environment	
Temperature	-35°F to +165°F (-34°C to +74°C)
Humidity	0% to 95% non-condensing
Vibration	0.5G, 3 axes, 5-30Hz
Shock	10G in all 3 axes
Ingress Protection	IP 67
Regulatory	NEMA TS-2
	FCC part 15, Class A
Warranty	3 years limited warranty



Vector on Next – Radar Zone Operation



Next Video Stream Displaying Video and Radar Operation



Copyright © 2024 Iteris, Inc. All rights reserved.

NOTICE: Iteris, Inc. reserves the right to change product specifications without notice. Information furnished is for informational purposes only. This information may not be complete or the latest version. For the most up-to-date information, please contact Iteris, Inc.